

September 13, 2019

Spectra Geospatial Distributor Confidential

Spectra ST10 – GNSS Receiver Configuration

The Spectra® ST10 tablet has an internal GNSS (Global Navigation Satellite System) receiver module built in. The GNSS receiver supports the following GNSS constellations:

- GPS L1 C/A
- Galileo
- GLONASS
- BeiDou
- QZSS

SBAS (Satellite Based Augmentation Systems) is also supported (EGNOS, WAAS, MSAS, GAGAN), with 2-5-meter typical accuracy.

The integrated GNSS module also supports dual constellation:

- GPS + GLONASS
- GPS + BeiDou

Note - You cannot use GLONASS and BeiDou at the same time.

The uBlox uCenter app allows for more granular configuration settings of the GNSS receiver. If required, you can download it from the uBlox website.

GNSS Configuration Application

The GNSS Configuration application enables configuration of the desired GNSS constellation for the ST10 tablet.

To download the GNSS Configuration application to the ST10 tablet:

1. Go to this URL link and download the app.
(<http://trl.trimble.com/docushare/dsweb/Get/Document-903197/GNSS%20Configuration.zip>)

This document is for informational purposes only and is not a legally binding agreement or offer Spectra Geospatial makes no warranties and assumes no obligations or liabilities hereunder.

© 2019, Trimble Inc. All rights reserved. Spectra Geospatial is a Division of Trimble Inc. Spectra Geospatial and the Spectra Geospatial logo are trademarks of Trimble Inc. or its subsidiaries. All other trademarks are the property of their respective owners. Microsoft, Windows, and Windows Location Services are either registered trademarks or trademarks of Microsoft Corporation in the United States and/or other countries. All other trademarks are the property of their respective owners.

2. Unzip it and save the GNSS Configuration.exe file to a known location on the T10 tablet (e.g. the Desktop).

To configure the GNSS receiver:

1. Ensure the GNSS receiver is not currently in use, then open the GNSS Configuration application and select the desired GNSS constellations. You may have to de-select some constellations to set the desired constellation configuration.
2. Click **Apply**.



If the message **Configuration Applied** appears in the bottom right corner of the application, your settings have been saved and you can continue to use the application as needed, and can ignore the rest of this document.

If the message **Could not apply configuration** appears, and the GNSS Receiver is **not currently connected**, follow the instructions below to ensure the necessary driver versions are installed.

Ensuring that the Correct Driver is in Use

Make sure that the correct driver is in use. If it isn't, you will need to install the correct driver.

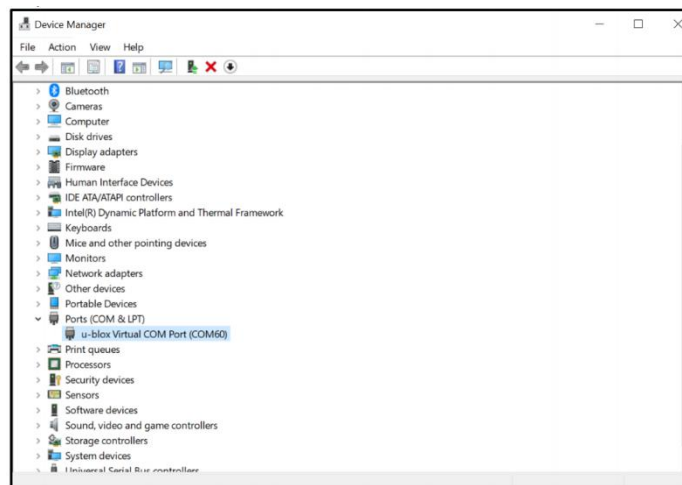
Product Models	Port Driver	Sensor Driver
ST10 (Wi-Fi), ST10 (4G)	u-blox [®] Virtual COM Port V2.30.0.0	u-blox GNSS Location Sensor V2.30.0.0
ST10 (2.4 GHz Spread-spectrum)	Silicon USB to UART Bridge: Standard COM Port V10.1.4.2290	None

Follow the instructions in the section relevant to you:

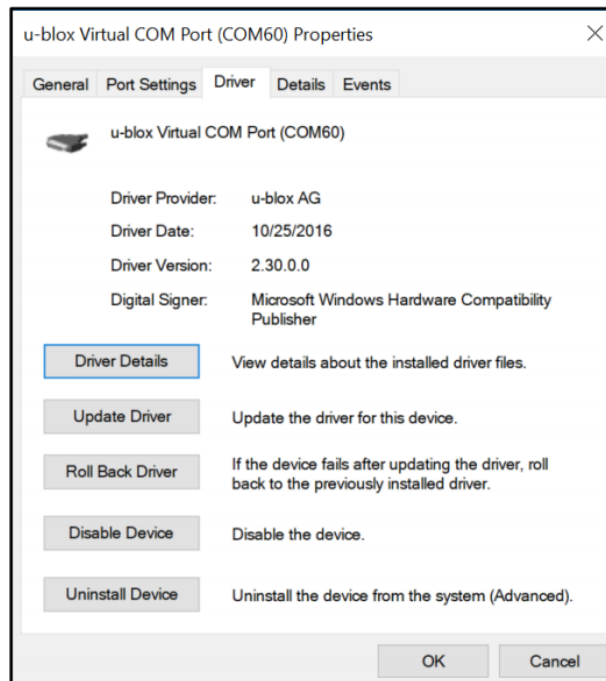
- **Spectra ST10 Tablet, 4G and/or Wi-Fi: Ensuring the correct driver and sensor version is installed**
 - Selecting the correct port driver
 - Selecting the correct sensor driver
- **Spectra ST10 Tablet, 2.4GHz Spread-spectrum: Ensuring the correct driver version is installed**
 - Selecting the correct port driver

Spectra ST10 tablet, 4G and/or Wi-Fi: Ensuring the correct driver and sensor version is installed

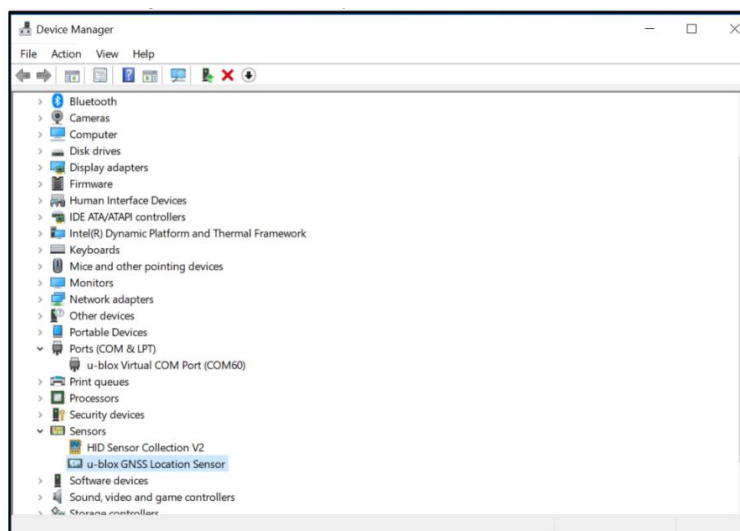
1. To check the version of the port driver on your ST10 tablet, tap-hold the Windows[®] Key, then search and open **Device Manager**.
2. Expand **Ports**.



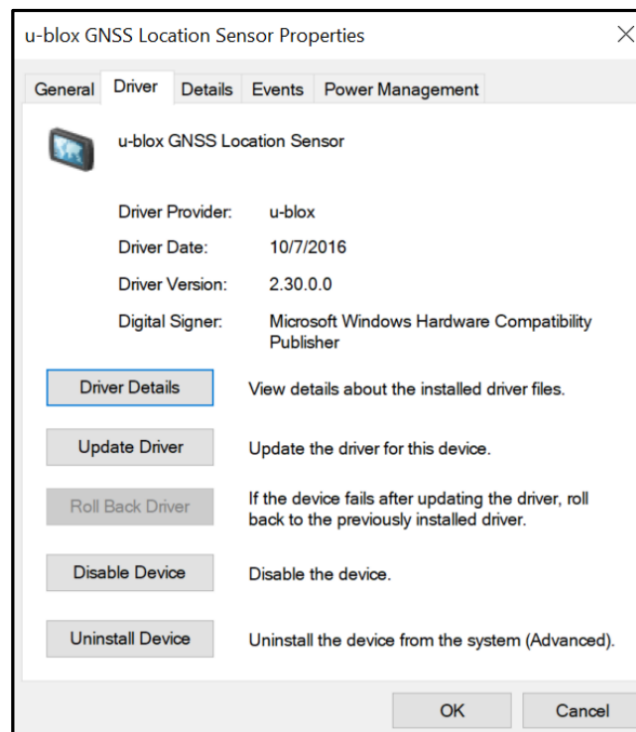
3. Tap-hold or right-click the u-blox Port and open **Properties**.
4. Select the **Driver** tab and view the **Driver Version**.



5. Close the **Properties** box and expand **Sensors**.



6. Tap-hold or right-click the u-blox Port and open **Properties**.
7. Select the **Driver** tab and view the **Driver Version**.



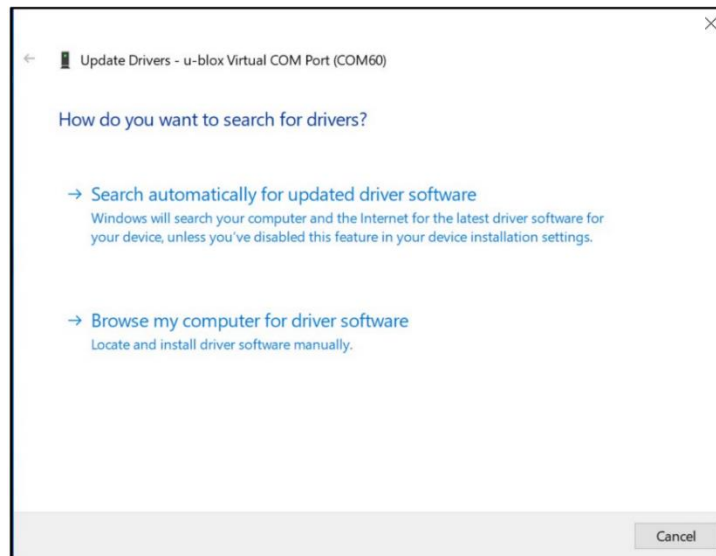
If the port or sensor driver on your device is not version 2.30.0.0, you will need to update these drivers. Follow the instructions for the necessary driver installations:

- [Spectra ST10 Tablet, 4G and/or Wi-Fi: Installing the Port Driver](#)
- [Spectra ST10 Tablet, 4G and/or Wi-Fi: Installing the Sensor Driver](#)

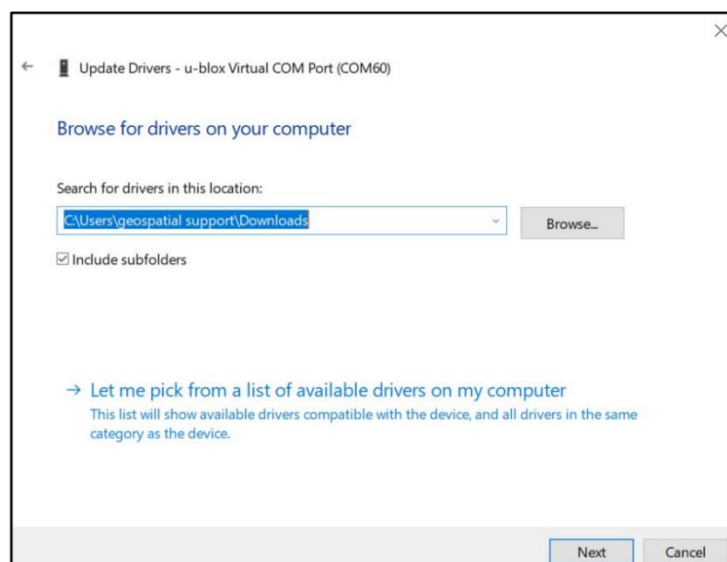
Spectra ST10 Tablet, 4G and/or Wi-Fi: Installing the Port Driver

1. Download and run the uBlox Port Driver Version [2.30.0.0](#) executable on the ST10 tablet.
2. In **Device Manager**, expand **Ports**.
3. Tap-hold or right-click the u-blox Port and open **Properties**.

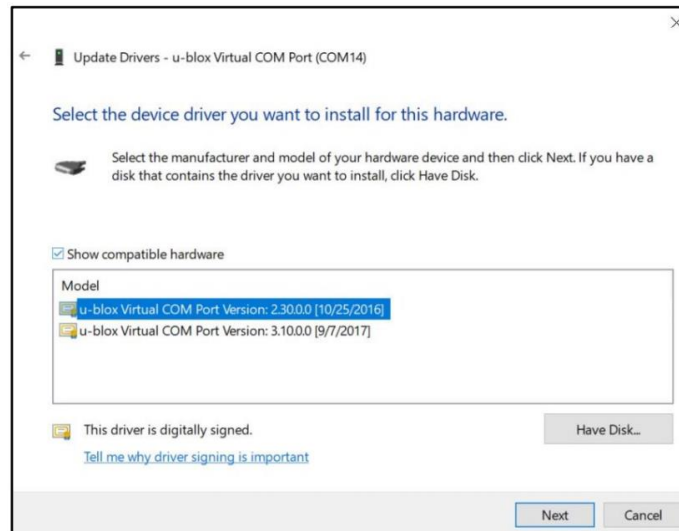
4. If the Driver version has been updated, you can move onto [Spectra ST10 Tablet, 4G and/or Wi-Fi: Installing the Sensor Driver](#). If the Port Driver isn't v2.30.00, continue with Step 5.
5. Select the **Driver** tab and select **Update Driver** and click **Browse my Computer for driver software**.



6. Select **Let me pick from a list of available drivers on my computer**.



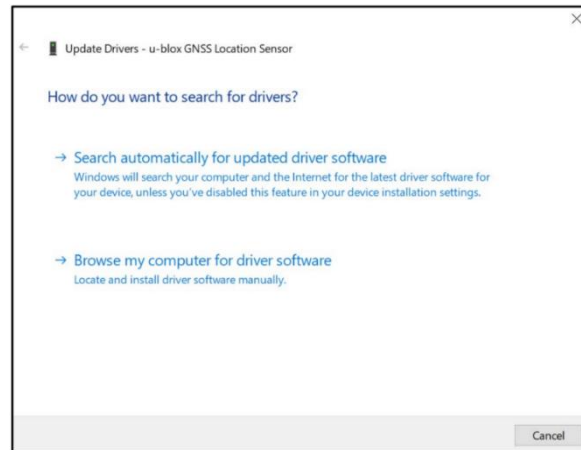
7. Select the **u-blox Virtual COM Port Version: 2.30.0.0** and click **Next**.



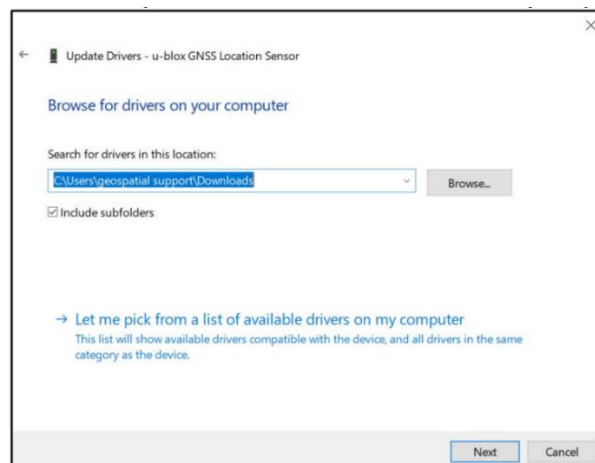
8. Click **Close**.

Spectra ST10 Tablet, 4G and/or Wi-Fi: Installing the Sensor Driver

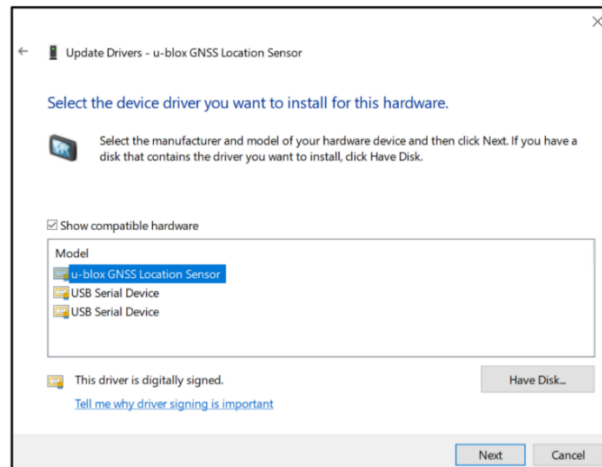
1. Download and run the uBlox Sensor Driver Version **2.30.0.0** executable on the ST10 tablet
2. In **Device Manager**, expand **Sensors**.
3. Tap-hold or right-click the u-blox Port and open **Properties**.
4. If the Driver version has been updated, you can close Device Manager and begin using the GNSS Configuration application. If it isn't v2.30.00 continue with Step 5.
5. Select the **Driver** tab and select **Update Driver** and click **Browse my Computer for driver software**.



6. Select **Let me pick from a list of available drivers on my computer.**



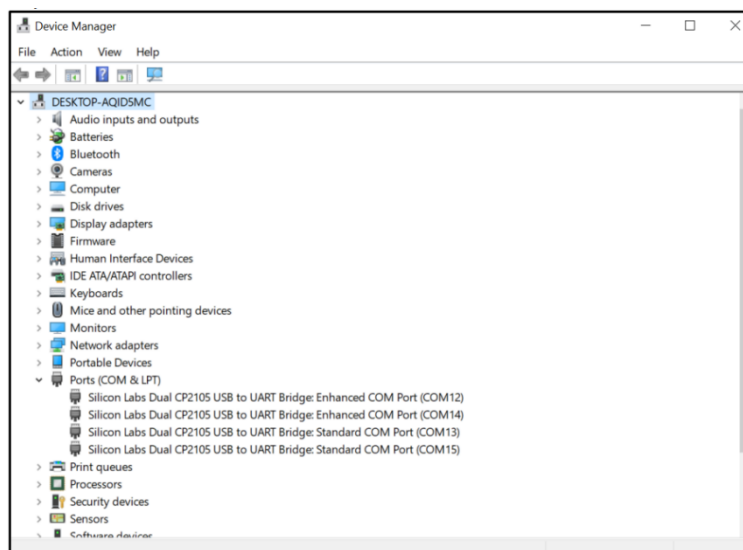
7. Select the **u-blox GNSS Location Sensor Version** and click **Next**.



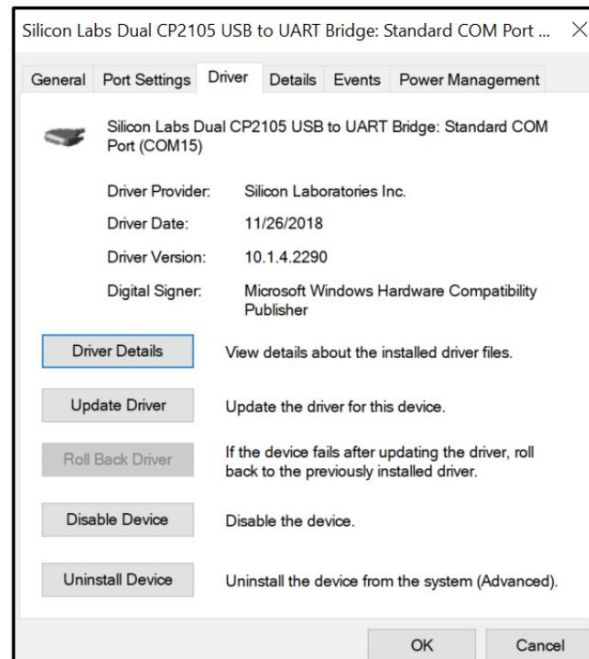
8. Click **Close**.

Spectra ST10 Tablet, 2.4GHz Spread-spectrum: Ensuring the correct driver is installed

1. To check the version of the port driver on your ST10 tablet, tap-hold the **Windows Key**, search for and open **Device Manager**.
2. Expand **Ports**.



3. Tap-hold or right-click any **Silicon Labs Dual CP210 USB to UART Bridge: Standard COM Port** and open **Properties**.
4. Select the Driver tab and view the Driver Version.



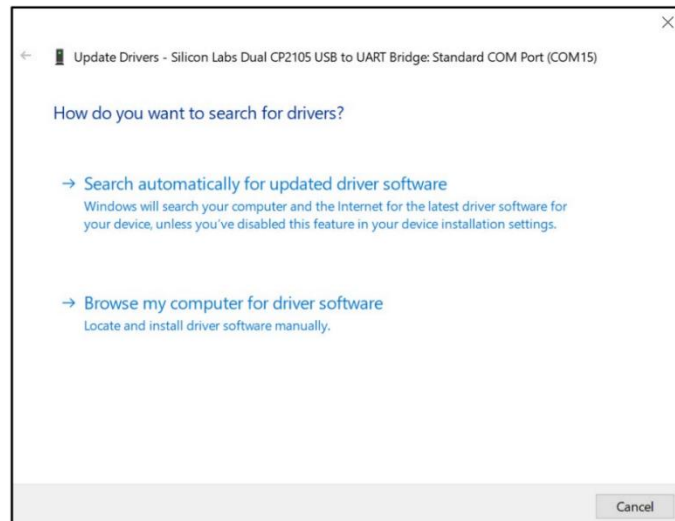
If the Port driver on your ST10 tablet is not version 10.1.4.2290, you may need to change the driver version. Follow the instructions for the necessary driver installations:

- [Spectra ST10 Tablet, 2.4GHz Spread-spectrum: Installing the Port Driver](#)

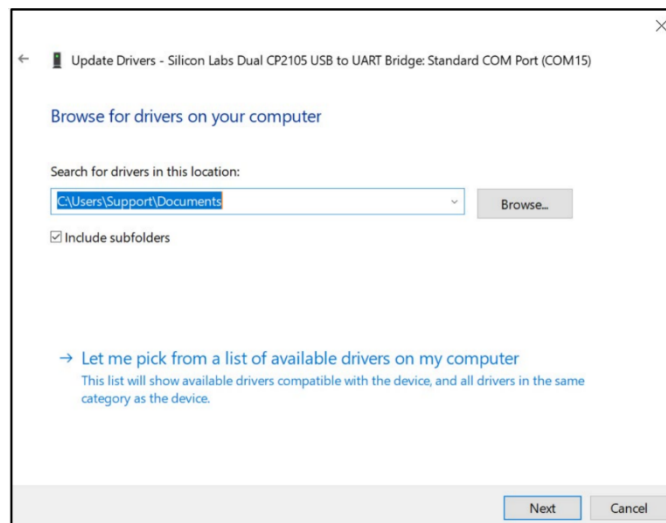
Spectra ST10 Tablet, 2.4GHz Spread-spectrum: Installing the Port Driver

1. Download and unzip this zipped [folder](#) to a known location onto your ST10 tablet.
2. Run the CP210xVCPInstaller_x64.exe to update the Com Port Driver.
3. In **Device Manager**, expand **Ports**.
4. Tap-hold or right-click the u-blox Port and open **Properties**.
5. If the Driver version has been updated, you can use the [GNSS Configuration](#) application. If the Port Driver isn't v10.1.4.2290, continue with Step 6.

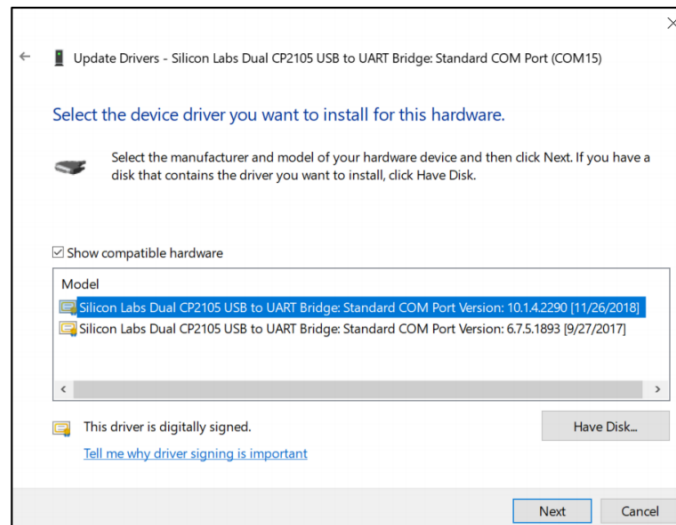
6. Tap-hold or right-click any **Silicon Labs Dual CP210 USB to UART Bridge: Standard COM Port** and open **Properties**.
7. Select the **Driver** tab and select **Update Driver** and click **Browse my Computer for driver software**.



8. Select **Let me pick from a list of available drivers on my computer**.



9. Select the **Silicon Labs Dual CP2105 USB to UART Bridge: Standard COM Port Version 10.1.4.2290** and click **Next**.



10. Click **Close**.

For more information:

Contact your local Spectra Distribution Partner.